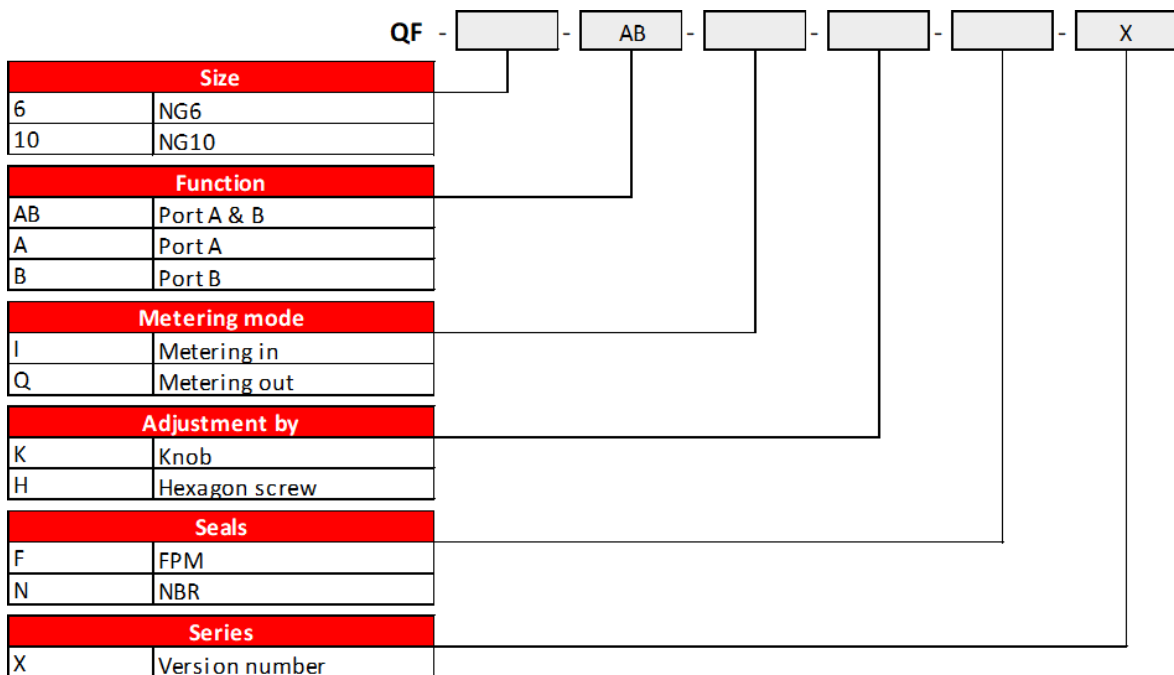




Product features

These are double throttle/check valve in sandwich plate design. They are used to limit the main or pilot flow of one or two service ports. Two symmetrically arranged throttle/check valves limit the flow in one direction and allow free-flow in the opposite direction. The throttling spool is axially adjustable via the adjustment screw or hand knob.

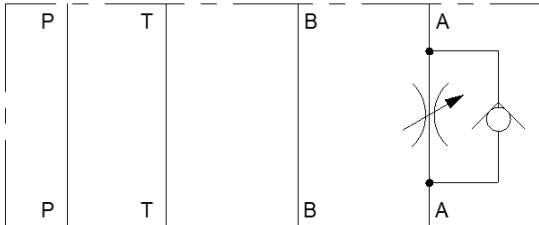
Model Code



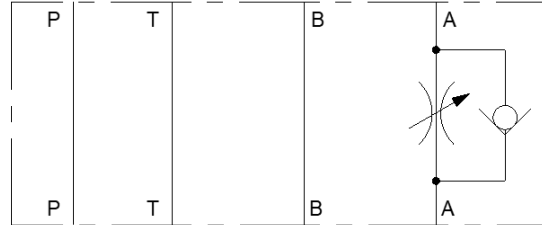
Graphic symbol

Function + metering mode

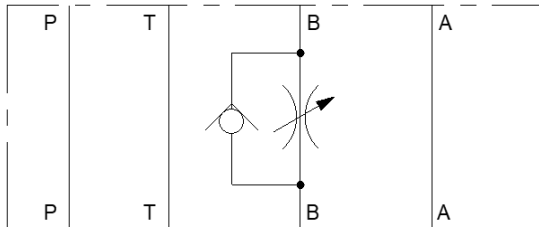
A-I



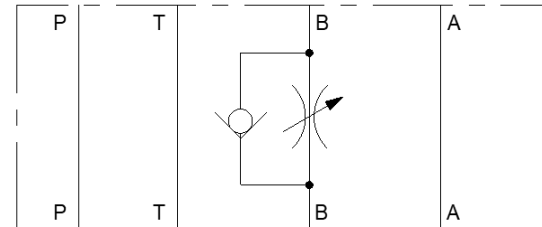
A-Q



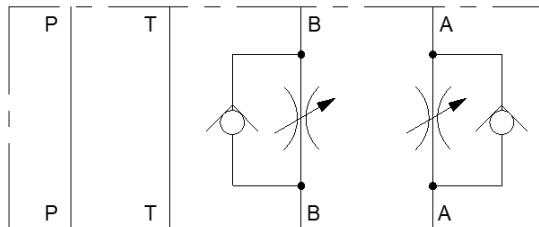
B-I



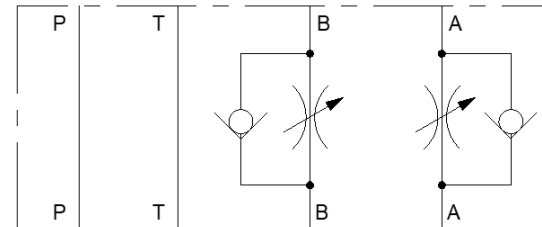
B-Q



AB-I

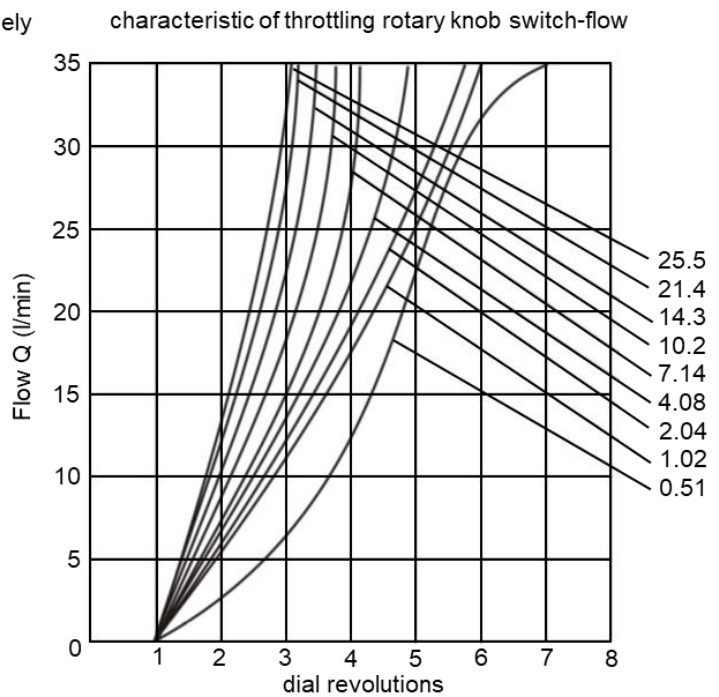
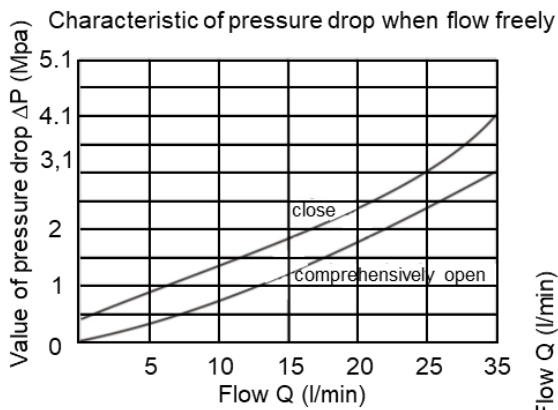
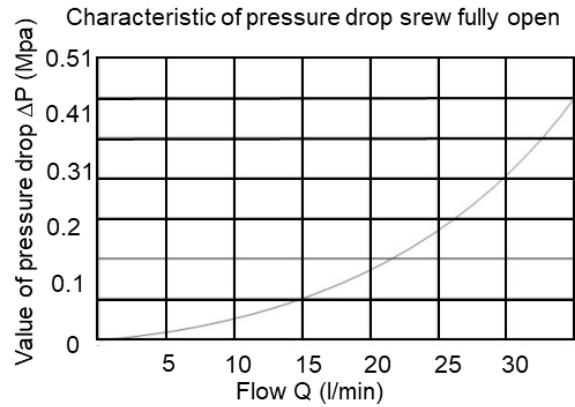
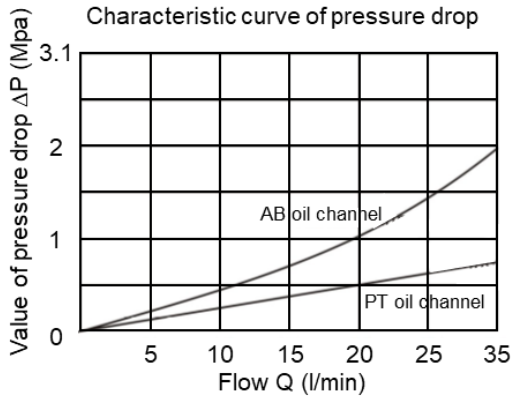


AB-Q

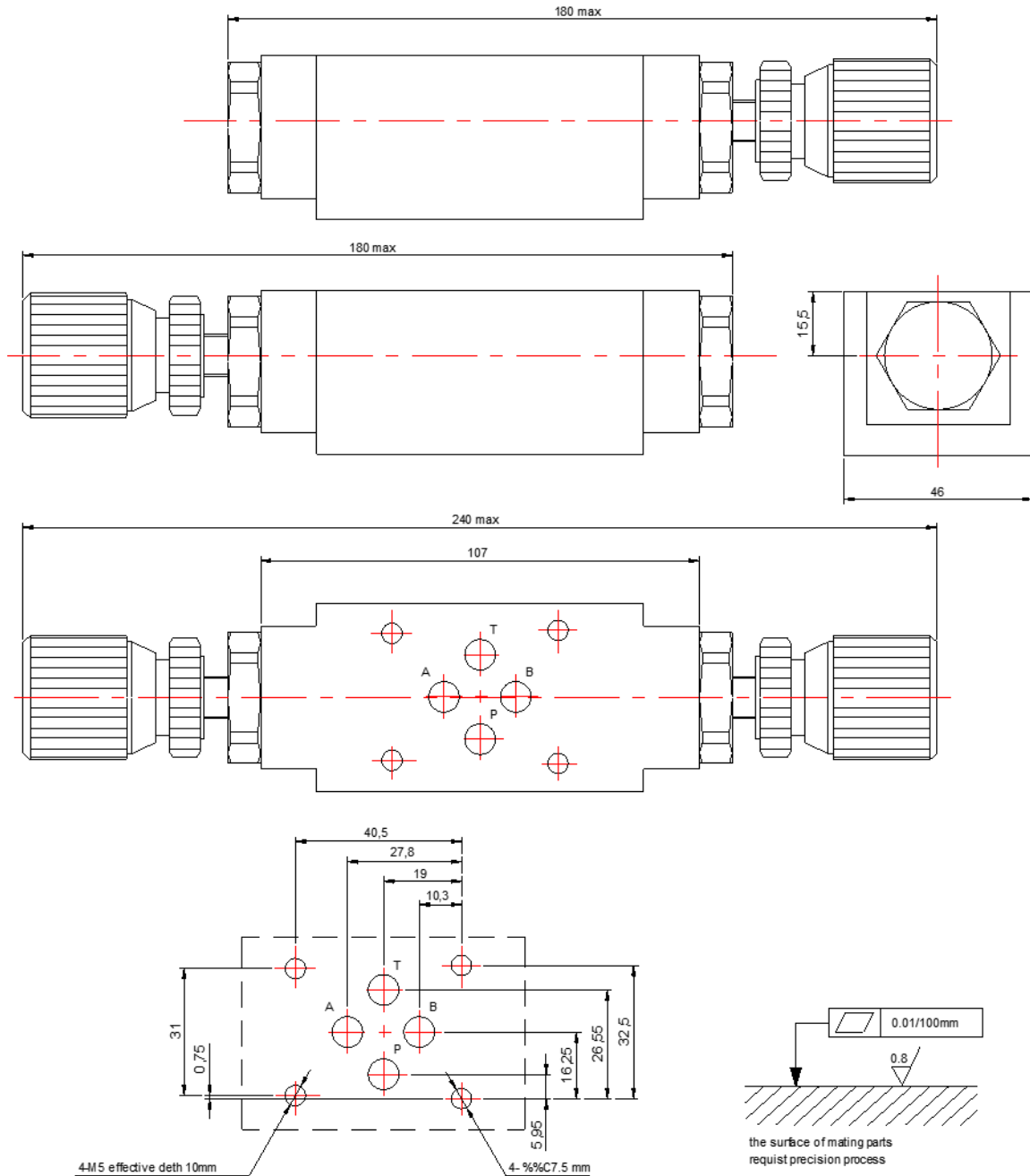


Technical data NG6

Size	The maximum pressure [Bar]	The maximum flow [l/min]	Weight [kg]
6	210	35	1.3



Installation Dimension NG6



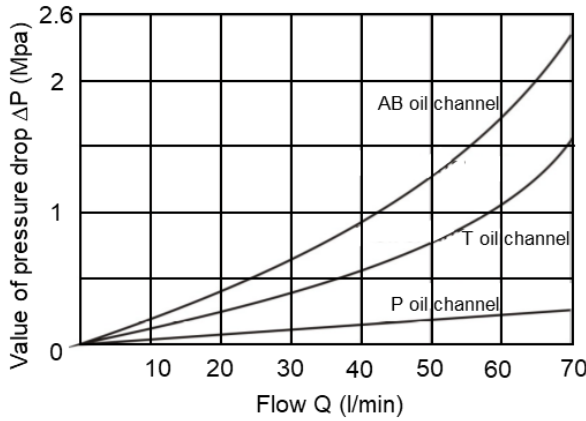
Ordering codes (most frequently used)

Article code	Description	Remark
QF100001	QF-6-AB-Q-H-F-X	
QF100003	QF-6-AB-I-H-FPM-X	
QS100001	Sealing set QC size 6	

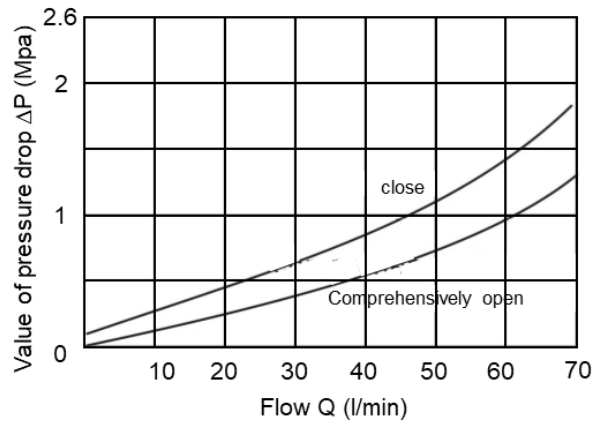
Technical data NG10

Size	The maximum pressure [Bar]	The maximum flow [l/min]	Weight [kg]
10	210	70	2.8

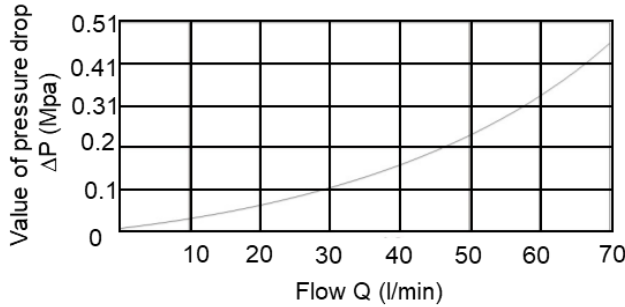
Characteristic curve of pressure drop



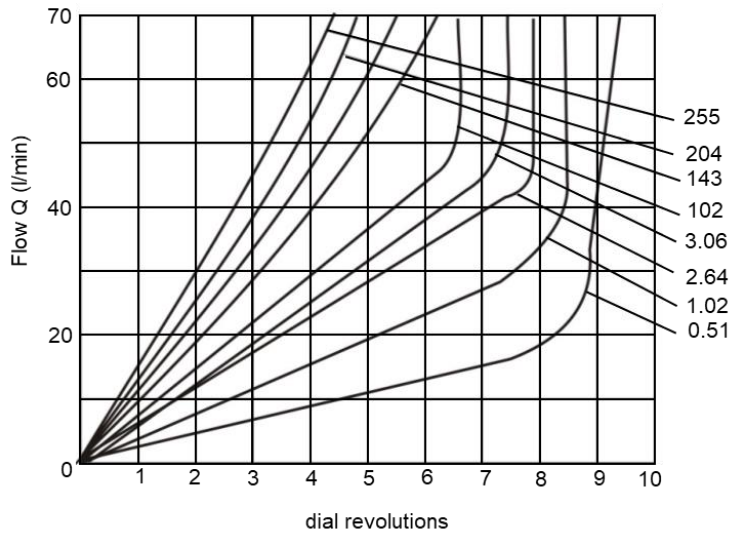
Characteristic of pressure drop when flow geely



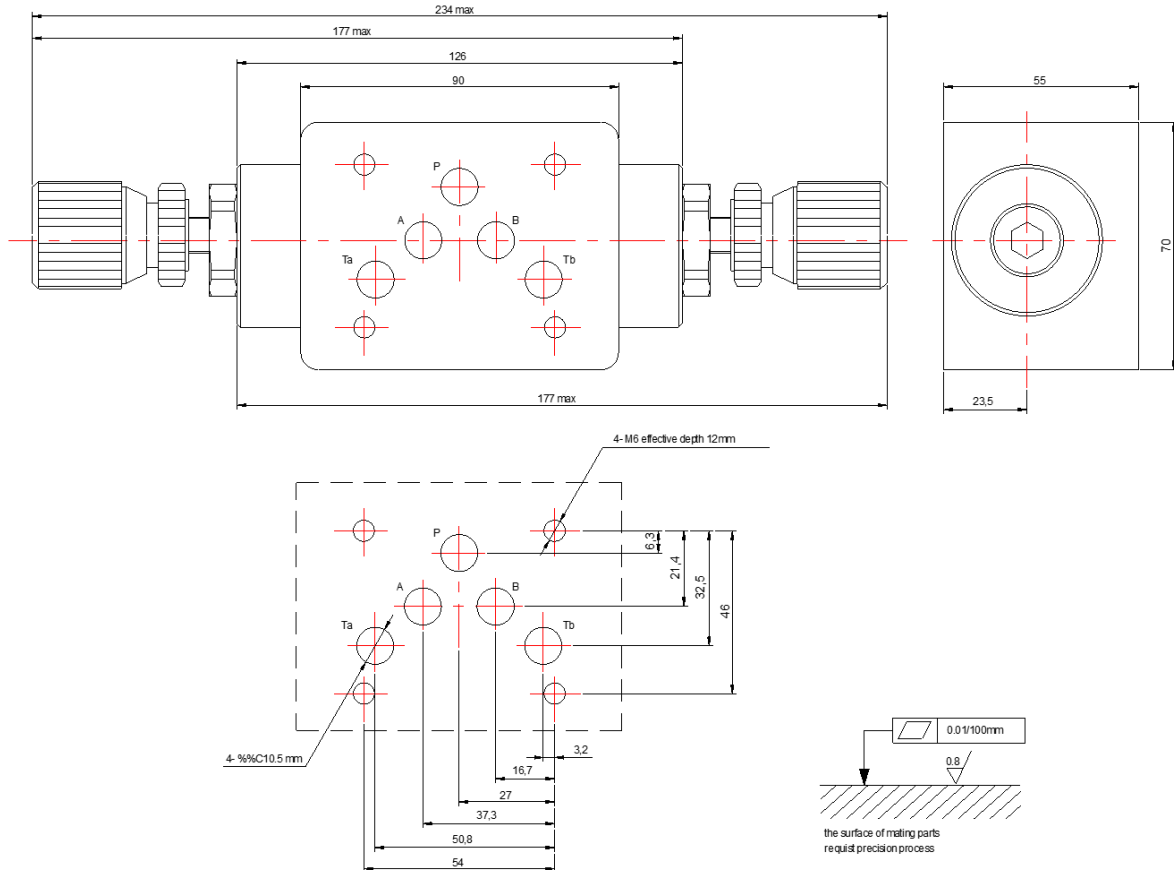
Characteristic of pressure drop when fully open



characteristic of throttling rotary knob switch-flow



Installation Dimension NG10



Ordering codes (most frequently used)

Article code	Description	Remark
QF100002	QF-10-AB-Q-H-F-X	
QF100004	QF-10-AB-I-H-FPM-X	
QS100002	Sealing set QC size 10	